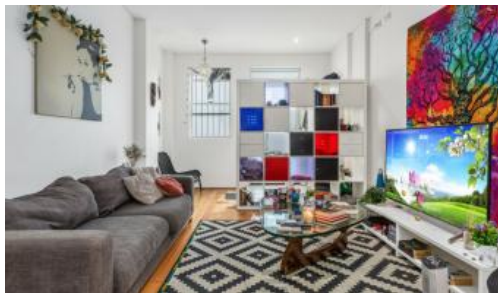




Unit 3, 44 Buckingham Street, Surry Hills



CONTACT AGENT TO INSPECT - OVERSIZED Residential/Commercial Studio in a Prime Location

Oversized Studio situated in a prime location within a quiet street of this buzzing district, this Studio ticks' boxes as a city-fringe pad. A great entry point or investment, it's ideally placed within footsteps of Surry Hills' vibrant café and dining precinct and with easy access to shops and the Light rail, Central Station and the CBD.

Features:

- Level entry + direct street access (internal access also)
- Commercial - Office usage subject to council approval
- Contemporary ambiance & fit out
- Floorboards & high ceilings throughout
- Large U-shaped kitchen breakfast bench & s/steel
- Dishwasher, laundry, glass splashbacks
- Fully tiled large bathroom
- Split air-conditioning unit
- Walking Distance to the Light Rail, Central Station & the CBD
- Located in a vibrant precinct with cafes, restaurants and bars all around.

Expenses:

Council Rates: \$195 per quarter approx.

Water Rates: \$153.90 per quarter approx.

Strata Levy: \$903.00 per quarter approx.

To Inspect this Property:-

1. Email Agent in Domain and you will be sent Inspections Times
2. Register to join an existing inspection or choose a new inspection
3. If there are no times, please register so we can contact you
4. If you do not register we cannot contact you to inform you of inspections, changes

1 Bed 1 Bath

Price
Property Type
Property ID

SOLD
Residential
206

Agent Details

Athena Tsolis - 0417 246 415

Office Details

Newtown
Flourmill Studios, Studio 103, 3
Gladstone Street Newtown NSW 2042
02 80688214



or cancellations

The above information provided has been furnished to us by the vendor/s. We have not verified whether or not that information is accurate and do not have any belief in one way or the other in its accuracy. We do not accept any responsibility to any person for its accuracy and do no more than pass it on. All interested parties should make and rely upon their own inquiries in order to determine whether or not this information is in fact accurate.